



GENERAL CATALOG



GENERAL CATALOG

Following in the footsteps of K-array's 30 years of Pro Audio research, a new brand is born in a bid to meet a wider range of users. Introducing KGEAR a new line of *smart* pro-audio products, designed and primarily made in Italy, that benefit from the uncompromising technology of K-array.

KGEAR presents audio speakers and electronics for small-to-large installations where audio solutions of all sizes are required. Staying true to its live vocation, the KGEAR line comprises also a wide range of solutions for all those applications, such as live entertainment and events, where audio has a central role, assuring everybody with an affordable market position.



GPXA

2x18" Subwoofer + 4x12" Slim Array System (Active) - Black color

🇮🇹 Made in Italy

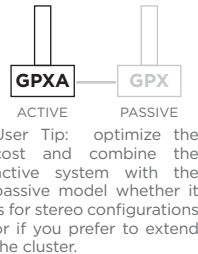


GPXA is our top of the line high performance active system and comprises of 2x18" powered subwoofer combined with GH412, our 4x12" passive coaxial slim array with K-array™ SAT® (Slim Array Technology), PAT® (Pure Array Technology) and a stainless steel cabinet. With its built-in 4x1500W RMS amplifier, this system can drive a GPX passive system in a stereo configuration. It features Powersoft™ DSP and power module, controlled via ethernet with Armonia™ control software. Thanks to its extreme performance and the compact format of the array, this system works in a stack configuration, with the array on top of the

subwoofer. It is also possible to fly GH412 with our GH-FLY flybar accessory, or place it on the ground with our GH-BASE accessory. Perfect for high SPL outdoor/indoor applications in large venues both for rental and permanent installations for touring, auditoriums, stadia, clubs, theme parks.

This system comes with the following ACCESSORIES:
GPINM20: M20 sub top pin
K-SPKCABLE2: 2m/6,6ft Speakon sub to satellite cable
3m/9,84ft Powercon TRUE power cord

- **GENERAL**
- Power Handling: 1500W subwoofer + 750W satellite
- Peak Power: 3000W subwoofer + 1500W satellite
- Impedance: 4Ω subwoofer + 8Ω satellite
- Frequency Range: 30Hz - 20KHz (-6dB average)
- Maximum SPL⁽¹⁾: 140dB (peak)
- Continuous SPL: 128dB
- Coverage: V.30° - H.90°
- **TRANSDUCERS**
- Subwoofer: 2 x 18" ferrite magnet
- Mid High Frequency: 4 x 12" coaxial
- with 1" compression driver ferrite magnet
- **AUDIO I/O**
- Analog power O: 1 x Speakon (4 wires) to drive a GPX Passive System in a stereo configuration
- 1 x Speakon (4 wires) to drive the satellite
- **AUDIO CONTROLS**
- Volume potentiometer | RJ45 connector | DSP can be remotely controlled via an Ethernet connection for control through Powersoft ArmoniaPlus Software
- **AMPLIFIER**
- Type: 4-channel Class-D audio amplifier
- Power: 4 x 1500W @4ohm
- AC input: 100-240V AC @50-60Hz Powercon TRUE
- Max power consumption: 500W Rated Load (1/8 Max Output Power)
- Protections: Thermal Protections (Power limiting - Thermal Shutdown), Short-circuit/overload output protections, stationary high frequency protection, peak limiter, RMS limiter, frequency dependent RMS limiter, Clip limiter



PHYSICAL OVERVIEW

SUBWOOFER
Width: 1035mm (40,75in)
Height: 614mm (24,17in)
Depth: 600mm (23,6in)
Weight: 59kg (130,07lbs)
Material: Birch plywood
Rating: IP41

SATELLITE
Width: 327mm (12,87in)
Height: 1290mm (50,79in)
Depth: 198mm (7,79in)
Weight: 55,2kg (121,69lbs)
Material: stainless steel
Rating: IP54

GPX

2x18" Subwoofer + 4x12" Slim Array System (Passive) - Black color

🇮🇹 Made in Italy

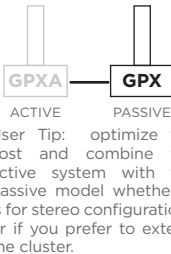


GPX is our top of the line high performance passive system and comprises of a 2x18" subwoofer combined with GH412, our 4x12" coaxial slim array with K-array™ SAT® (Slim Array Technology), PAT® (Pure Array Technology) and a stainless steel cabinet. This system can be driven by GPXA active system in a stereo configuration or by GA46 power amplifiers. Thanks to its extreme performance and the compact format of the array, this system works in a stack configuration, with the array on top of the subwoofer. It is also possible to fly GH412 with our GH-FLY flybar accessory, or place it on the ground with our GH-BASE accessory.

Perfect for high SPL outdoor/indoor applications in large venues both for rental and permanent installations for touring, auditoriums, stadia, clubs, theme parks.

This system comes with the following ACCESSORIES:
GPINM20: M20 sub top pin
K-SPKCABLE15: 15m/49ft Speakon cable
K-SPKCABLE2: 2m/6,6ft Speakon sub to satellite cable
3m/9,84ft Powercon TRUE power cord

- **GENERAL**
- Power Handling: 1500W subwoofer + 750W satellite
- Peak Power: 3000W subwoofer + 1500W satellite
- Impedance: 4Ω subwoofer + 8Ω satellite
- Frequency Range: 30Hz - 20KHz (-6 dB average)
- Maximum SPL⁽¹⁾: 140dB (peak)
- Continuous SPL: 128dB
- Coverage: V.30° - H.90°
- **TRANSDUCERS**
- Subwoofer: 2 x 18" ferrite magnet
- Mid High Frequency: 4 x 12" coaxial
- with 1" compression driver ferrite magnet
- **AUDIO I/O**
- Analog power I: 1 x Speakon (4 wires)
- Analog power O: 1 x Speakon (4 wires)



PHYSICAL OVERVIEW

SUBWOOFER
Width: 1035mm (40,75in)
Height: 614mm (24,17in)
Depth: 600mm (23,6in)
Weight: 58kg (127,88lbs)
Material: birch plywood
Rating: IP43

SATELLITE
Width: 327mm (12,87in)
Height: 1290mm (50,79in)
Depth: 198mm (7,79in)
Weight: 55,2kg (121,69lbs)
Material: stainless steel
Rating: IP54

NOTE: (1) Maximum SPL is calculated using a signal with crest factor 4 (12dB) measured at 1 m

GPZA

2x18" Sub + 2x12" Slim Array System (Active) - Black color

🇮🇹 Made in Italy



GPZA is an active system that includes a 2x18" powered subwoofer combined with 2 GH12, our 12" passive coaxial satellites featuring K-array™ SAT® (Slim Array Technology) and a stainless steel cabinet.

With its built-in 4x1500W RMS amplifier, this system can drive a GPZ passive system in a stereo configuration. It features Powersoft™ DSP and power module, controlled via ethernet with Armonia™ control software.

Thanks to the impressive overall performance and the compact format of

the satellites, this system is perfect for high performance outdoor/indoor applications both for rental and permanent installations for touring, large auditoriums, stadia, clubs and pubs, theme parks.

The system comes with the following ACCESSORIES:

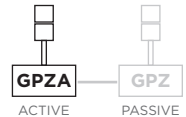
G-POLE: Adjustable satellite stand with M20 screw bottom
K-SPKCABLE2: 2m/6,6ft Speakon sub to satellite cable
K-SPKCABLE750: 0,75m/2,46ft Speakon satellite to satellite cable
3m/9,84ft Powercon TRUE power cord

- **GENERAL**
- Power Handling: 1500W subwoofer + 400W satellite
- Peak Power: 3000W subwoofer + 800W satellite
- Impedance: 4Ω subwoofer + 32Ω each satellite
- Frequency Range: 30Hz - 20KHz (-6dB average)
- Maximum SPL⁽¹⁾: 137dB (peak)
- Continuous SPL: 125dB
- Coverage: V.30° - H.90°
- **TRANSDUCERS**
- Subwoofer: 2 x 18" ferrite magnet
- Mid High Frequency: 2 x 12" coaxial with 1" compression driver ferrite magnet

- **AUDIO I/O**
- Analog power O: 1 x Speakon (4 wires) to drive a GPZ Passive Systems in a stereo configuration
- 1 x Speakon (4 wires) to drive the satellites

- **AUDIO CONTROLS**
- Volume potentiometer | RJ45 connector | DSP can be remotely controlled via an Ethernet connection through Powersoft ArmoniaPlus Software

- **AMPLIFIER**
- Type: 4-channel Class-D audio amplifier
- Power: 4 x 1500W @4ohm
- AC input: 100-240V AC @50-60Hz Powercon TRUE
- Max power consumption: 500W Rated Load (1/8 Max Output Power)
- Protections: Thermal Protections (Power limiting - Thermal Shutdown),
- Short-circuit/overload output protections, stationary high frequency
- protection, peak limiter, RMS limiter, frequency dependent RMS limiter, Clip limiter



User Tip: optimize the cost and combine the active system with the passive model whether it is for stereo configurations or if you prefer to extend the cluster.

PHYSICAL OVERVIEW

SUBWOOFER
Width: 1035mm (40,75in)
Height: 614mm (24,17in)
Depth: 600mm (23,6in)
Weight: 59kg (130,07lbs)
Material: Birch plywood
Rating: IP41

SATELLITE
Width: 327mm (12,87in)
Height: 334mm (13,15in)
Depth: 198mm (7,79in)
Weight: 13,8kg (30,43lbs)
Material: Stainless Steel
Rating: IP54

GPZ

2x18" Sub + 2x12" Slim Array System (Passive) - Black color

🇮🇹 Made in Italy



GPZ is a passive system that includes a 2x18" powered subwoofer combined with 2 GH12, our 12" passive coaxial satellites featuring K-array™ SAT® (Slim Array Technology) and a stainless steel cabinet.

This system can be driven by GPZA active system in a stereo configuration or by GA43 and GA46 power amplifiers. Thanks to the impressive overall performance and the compact format of the satellites, this system is perfect for high performance outdoor/indoor applications

both for rental and permanent installations for touring, large auditoriums, stadia, clubs and pubs, theme parks.

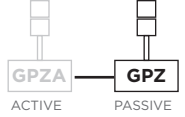
The system comes with the following ACCESSORIES:

G-POLE: Adjustable satellite stand with M20 screw bottom
K-SPKCABLE15: 15m/49ft Speakon cable
K-SPKCABLE2: 2m/6,6ft Speakon sub to satellite cable
K-SPKCABLE750: 0,75m/2,46ft Speakon satellite to satellite cable

- **GENERAL**
- Power Handling: 1500W subwoofer + 400W satellite
- Peak Power: 3000W subwoofer + 800W satellite
- Impedance: 4Ω subwoofer + 32Ω each satellite
- Frequency Range: 30 Hz - 20 KHz (-6 dB average)
- Maximum SPL⁽¹⁾: 137dB (peak)
- Continuous SPL: 125dB
- Coverage: V.30° - H.90°

- **TRANSDUCERS**
- Subwoofer: 2 x 18" ferrite magnet
- Mid High Frequency: 2 x 12" coaxial with 1" compression driver ferrite magnet

- **AUDIO I/O**
- Analog power I: 1 x Speakon (4 wires)
- Analog power O: 1 x Speakon (4 wires)



User Tip: optimize the cost and combine the active system with the passive model whether it is for stereo configurations or if you prefer to extend the cluster.

PHYSICAL OVERVIEW

SUBWOOFER
Width: 1035mm (40,75in)
Height: 614mm (24,17in)
Depth: 600mm (23,6in)
Weight: 58kg (127,88lbs)
Material: Birch plywood
Rating: IP43

SATELLITE
Width: 327mm (12,87in)
Height: 334mm (13,15in)
Depth: 198mm (7,79in)
Weight: 13,8kg (30,43lbs)
Material: Stainless Steel
Rating: IP54

NOTE: (1) Maximum SPL is calculated using a signal with crest factor 4 (12dB) measured at 1 m





GP1812A

18" Sub + 12" Slim Array Element (Active) - Black color

Made in Italy

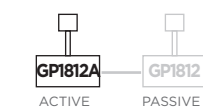


Heavy duty 18" powered subwoofer combined with GH12, our 12" passive coaxial satellite featuring K-array™ SAT® (Slim Array Technology). It can drive up to additional 3 GP1812 passive systems in a stereo configuration. It features Powersoft™ DSP and power module with ethernet remote control and Armonia™ control software. Designed for small to medium high performance outdoor/indoor applications both for rental and permanent installations for touring, live bands, auditoriums, pubs and clubs.

High performance to size/weight ratio featuring easy and fast setup possibility.

The system comes with the following ACCESSORIES:
G-POLE: Adjustable satellite stand with M20 screw bottom
K-SPKCABLE2: 2m/6.6ft Speakon sub to satellite cable
3m/9.84ft Powercon TRUE power cord

- **GENERAL**
- Power Handling: 750W subwoofer + 200W satellite
- Peak Power: 1500W subwoofer + 400W satellite
- Impedance: 8Ω subwoofer + 32Ω satellite
- Frequency Range: 45Hz - 20KHz (-6dB average)
- Maximum SPL⁽¹⁾: 129dB (peak)
- Continuous SPL: 117dB
- Coverage: V.30° - H.90°
- **TRANSDUCERS**
- Subwoofer: 18" ferrite magnet
- Mid High Frequency: 12" coaxial with 1" compression driver ferrite magnet
- **AUDIO I/O**
- Analog power O: 1 x Speakon (4 wires) to drive GP1812 Passive Systems in a stereo configuration
- 1 x Speakon (4 wires) to drive the satellite and other GP1812 Passive Systems
- **AUDIO CONTROLS**
- Volume potentiometer | RJ45 connector | DSP can be remotely controlled via an Ethernet connection through Powersoft ArmoniaPlus Software
- **AMPLIFIER**
- Type: 4-channel Class-D audio amplifier
- Power: 4 x 1500W @4ohm
- AC input: 100-240V AC @50-60Hz Powercon TRUE
- Max power consumption: 500W Rated Load (1/8 Max Power)
- Protections: Thermal Protections (Power limiting - Thermal Shutdown), Short-circuit/overload output protections, stationary high frequency protection, peak limiter, RMS limiter, frequency dependent RMS limiter, Clip limiter



User Tip: optimize the cost and combine the active system with the passive model whether it is for stereo configurations or if you prefer to extend the cluster.

PHYSICAL OVERVIEW

SUBWOOFER
Width: 545mm (21,46in)
Height: 610mm (24,02in)
Depth: 600mm (23,6in)
Weight: 35,4kg (76,37lbs)
Material: Birch plywood
Rating: IP41

SATELLITE
Width: 327mm (12,87in)
Height: 334mm (13,15in)
Depth: 198mm (7,79in)
Weight: 13,8kg (30,43lbs)
Material: Stainless steel
Rating: IP54

GP1812

18" Subwoofer + 12" Slim Array Element (Passive) - Black color

Made in Italy



Heavy duty 18" passive subwoofer combined with GH12, our 12" passive coaxial satellite featuring K-array™ SAT® (Slim Array Technology).

Designed for small to medium high performance outdoor/indoor applications both for rental and permanent installations for touring, live bands, auditoriums, pubs and clubs.

High performance to size/weight ratio featuring easy and fast setup possibility.

The system comes with the following ACCESSORIES:
G-POLE: Adjustable satellite stand with M20 screw bottom
K-SPKCABLE15: 15m/49ft Speakon cable
K-SPKCABLE2: 2m/6.6ft Speakon sub to satellite cable

- **GENERAL**
- Power Handling: 750W subwoofer + 200W satellite
- Peak Power: 1500W subwoofer + 400W satellite
- Impedance: 8Ω subwoofer + 32Ω satellite
- Frequency Range: 45 Hz - 20 KHz (-6 dB average)
- Maximum SPL⁽¹⁾: 129dB (peak)
- Continuous SPL: 117dB
- Coverage: V.30° - H.90°
- **TRANSDUCERS**
- Subwoofer: 18" ferrite magnet
- Mid High Frequency: 12" coaxial with 1" compression driver ferrite magnet
- **AUDIO I/O**
- Analog power I: 1 x Speakon (4 wires)
- Analog power O: 1 x Speakon (4 wires)
- **PHYSICAL OVERVIEW**
- **SUBWOOFER**
Width: 545mm (21,46in)
Height: 610mm (24,02in)
Depth: 600mm (23,6in)
Weight: 34,4kg (75,84lbs)
Material: Birch plywood
Rating: IP43
- **SATELLITE**
Width: 327mm (12,87in)
Height: 334mm (13,15in)
Depth: 198mm (7,79in)
Weight: 13,8kg (30,43lbs)
Material: Stainless steel
Rating: IP54

NOTE: (1) Maximum SPL is calculated using a signal with crest factor 4 (12dB) measured at 1 m



GP18A

18" Subwoofer + 24x2" Modular Column System (Active) - Black color

Made in Italy



Heavy duty 18" powered subwoofer combined with 3 modular 8x2" transducer array elements featuring PAT® K-array™ technology. It can drive up to additional 3 GP18 passive systems in a stereo configuration. It features Powersoft™ DSP and power module with ethernet remote control and Armonia™ control software.

Designed for high performance outdoor/indoor applications both for rental and permanent installations for touring,

live bands, auditorium, and clubs. High performance to size/weight ratio featuring easy and fast setup possibility.

The system comes with the following ACCESSORIES:

3m/9,84ft Powercon TRUE power cord

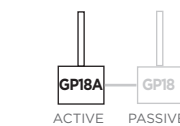
- **GENERAL**
- Power Handling: 750W subwoofer + 700W satellite
- Peak Power: 1500W subwoofer + 1400W satellite
- Impedance: 8Ω subwoofer + 16Ω each segment
- Frequency Range: 45Hz - 20KHz (-6dB average)
- Maximum SPL⁽¹⁾: 125dB peak *measured at 8m and then scaled at 1m (peak)
- Continuous SPL: 113dB
- Coverage: V.20° - H.140°

- **TRANSDUCERS**
- Subwoofer: 18" ferrite magnet
- Mid High Frequency: 3 modules with 8 x 2" ferrite magnet

- **AUDIO I/O**
- Analog power O: 1 x Speakon (4 wires) to drive GP18 Passive Systems in a stereo configuration
- 1 x Speakon (4 wires) to drive the satellite and other GP18 Passive Systems

- **AUDIO CONTROLS**
- Volume potentiometer | RJ45 connector | DSP can be remotely controlled via an Ethernet connection through Powersoft ArmoniaPlus Software

- **AMPLIFIER**
- Type: 4-channel Class-D audio amplifier
- Power: 4 x 1500W @4ohm
- AC input: 100-240V AC @50-60Hz Powercon TRUE
- Max power consumption: 500W Rated Load (1/8 Max Power)
- Protections: Thermal Protections (Power limiting - Thermal Shutdown),
- Short-circuit/overload output protections, stationary high frequency protection, peak limiter, RMS limiter, frequency dependent RMS limiter, Clip limiter



User Tip: optimize the cost and combine the active system with the passive model whether it is for stereo configurations or if you prefer to extend the cluster.

PHYSICAL OVERVIEW

SUBWOOFER
Width: 545mm (21,46in)
Height: 610mm (24,02in)
Depth: 600mm (23,6in)
Weight: 35,4kg (76,37lbs)
Material: Birch plywood
Rating: IP41

SATELLITE
Width: 85mm (3,34in)
Height: 1610mm (63,38in)
Depth: 105mm (4,13in)
Weight: 6kg (13,22lbs)
Material: ABS
Rating: IP54

GP18

18" Subwoofer + 24x2" Modular Column System (Passive) - Black color

Made in Italy



This high performance system includes a 18" passive subwoofer combined with 3 modular 8x2" transducer array elements featuring K-array™ PAT® technology (Pure Array Technology).

The column is composed by 3 8x2" interchangeable array modules with an alternating horizontal inclination of each driver, which gives GP18 a 140° wide horizontal dispersion angle for an incredibly immersive sound stage.

Designed for low eye impact outdoor/indoor applications both for rental and permanent installations for public events, live bands, auditoriums, bars and clubs. Perfect companion of GP18A to create a stereo system or driven by GA43 and GA46 amplifiers.

The system comes with the following ACCESSORIES:

K-SPKCABLE15: 15m/49ft Speakon cable
3m/9,84ft Powercon power cord

- **GENERAL**
- Power Handling: 750W subwoofer + 700W satellite
- Peak Power: 1500W subwoofer + 1400W satellite
- Impedance: 8Ω subwoofer + 16Ω each segment
- Frequency Range: 45 Hz - 20 KHz (-6 dB average)
- Maximum SPL⁽¹⁾: 125dB peak *measured at 8m and then scaled at 1m (peak)
- Continuous SPL: 113dB
- Coverage: V.20° - H.140°

- **TRANSDUCERS**
- Subwoofer: 18" ferrite magnet
- Mid High Frequency: 3 modules with 8 x 2" ferrite magnet

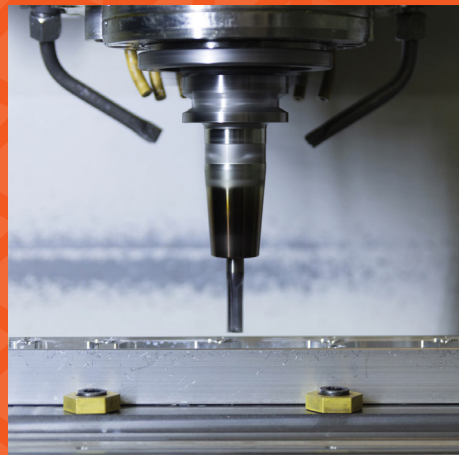
- **AUDIO I/O**
- Analog power I: 1 x Speakon (4 wires)
- Analog power O: 1 x Speakon (4 wires)

PHYSICAL OVERVIEW

SUBWOOFER
Width: 545mm (21,46in)
Height: 610mm (24,02in)
Depth: 600mm (23,6in)
Weight: 34,4kg (75,84lbs)
Material: Birch plywood
Rating: IP43

SATELLITE
Width: 85mm (3,34in)
Height: 1610mm (63,38in)
Depth: 105mm (4,13in)
Weight: 6kg (13,22lbs)
Material: ABS
Rating: IP54

NOTE: (1) Maximum SPL is calculated using a signal with crest factor 4 (12dB) measured at 1 m



Stainless Steel Design

GH412 and **GH12** is made out of Grade 430 stainless steel, an alloy that combines good formability and finish capabilities with an excellent resistance to pitting and corrosion.

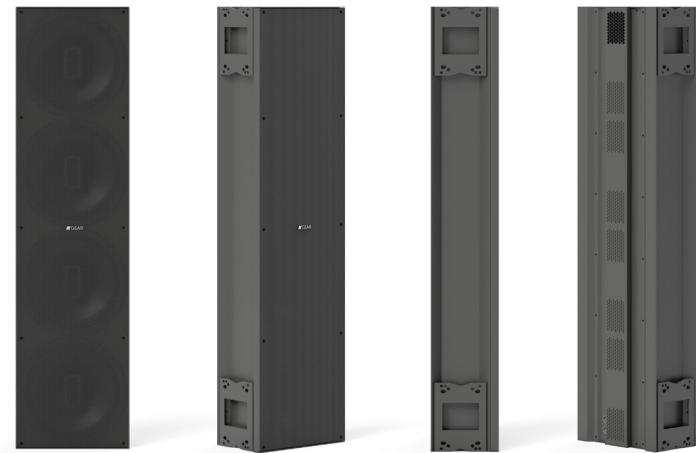
The high density and neutral sonic characteristics of this material make it a perfect choice for applications that require compact design, resistance to adverse conditions and high sound performance.



GH412

4x12" High Efficiency Coaxial Slim Array - Black color

Made in Italy



Metal frame 4 x 12" coaxial PAT® SAT® K-array™ technologies high efficiency array passive element.

Designed for high performance outdoor/indoor applications both for rental and permanent installations for touring, large auditorium, stadia, theme parks and clubs. Weather resistant rugged metal structure box.

High performance to size/weight ratio featuring easy and fast setup possibility. Suggested amplifiers GA43 and GA46.

AVAILABLE ACCESSORIES:

GH-BASE: Ground stacking hardware for up to 2 GH412 or 8 G12
GH-FLY: Flying hardware for GH12 / GH412
GH-JOINT: Adjustable rigging hardware for GH12or GH12 / GH412

- **GENERAL**
- Continuous power: 800W
- Peak power: 1600W
- Impedance: 8Ω
- Frequency range: 125hz - 20khz (-6db average)
- Maximum SPL⁽¹⁾: 140dB (peak)
- Continuos SPL: 128dB
- Coverage: v.30° - H.90°
- **TRANSDUCERS**
- 4 x 12" coaxial with 1" compression driver ferrite magnet
- **AUDIO I/O**
- Analog power I: 1 x Speakon (4 wires)
- Analog power O: 1 x Speakon (4 wires)
- **PHYSICAL OVERVIEW**
- Width: 327mm (12,87in)
- Height: 1290mm (50,79in)
- Depth: 198mm (7,79in)
- Weight: 55,2kg (121,69lbs)
- Material: Stainless steel
- Color: Black
- Rating: IP54

GH12

12" High Efficiency Coaxial Slim Array Element - Black color

Made in Italy



This passive 12" coaxial array element features a compact stainless steel, weather resistant cabinet that benefits from K-array™ SAT® (Slim Array Technology).

Its cardioid dispersion pattern limits the loss of energy in unwanted directions. More units can be joined together to form a line array and scale up the system. Designed for high performance outdoor/

indoor applications both for fixed and moving installations for live events, auditoriums, transportation facilities, stadia, theme parks and big and clubs. Suggested amplifiers GA43 and GA46.

AVAILABLE ACCESSORIES:

GH-BASE: Ground stacking hardware for up to 2 GH412 or 8 G12
GH-FLY: Flying hardware for GH12 / GH412
GH-JOINT: Adjustable rigging hardware for GH12or GH12 / GH412

- **GENERAL**
- Continuous power: 200W
- Peak power: 400W
- Impedance: 32Ω
- Frequency range: 125hz - 20khz (-6db average)
- Maximum SPL⁽¹⁾: 129dB (peak)
- Continuos SPL: 117dB
- Coverage: v.30° - H.90°
- **TRANSDUCERS**
- 12" Coaxial with 1" compression driver ferrite magnet
- **AUDIO I/O**
- Analog power I: 1 x Speakon (4 wires)
- Analog power O: 1 x Speakon (4 wires)
- **PHYSICAL OVERVIEW**
- Width: 327mm (12,87in)
- Height: 334mm (13,15in)
- Depth: 198mm (7,79in)
- Weight: 13,8kg (30,43lbs)
- Material: Stainless steel
- Color: Black
- Rating: IP54

NOTE: (1) Maximum SPL is calculated using a signal with crest factor 4 (12dB) measured at 1 m

GS218

2x18" Passive Subwoofer

🇮🇹 Made in Italy



This heavy duty 2x18" passive subwoofer is designed for high performance outdoor/indoor applications for rental and permanent installations in touring, large auditoriums, halls, stadia, theme parks and clubs. Impressive performance and great durability are guaranteed thanks to its plywood rugged cabinet.

Perfect companion for GH412 and GH12 high performance satellites, GS218 can be driven by our GA43 and GA46 amplifiers.

AVAILABLE ACCESSORIES:
GS218-COVER

GENERAL
Continuous Power: 1600W
Peak Power: 3200W
Impedance: 4Ω
Frequency Range: 30Hz - 150KHz (-6dB average)
Maximum SPL⁽¹⁾: 138dB (peak)
Continuos SPL: 126dB
Coverage: OMNI - (CARDIOID)
Preset available for min 2 units)

TRANSDUCERS
2 x 18" ferrite magnet

AUDIO I/O
Analog power I: 1 x Speakon (4 wires)
Analog power O: 1 x Speakon (4 wires)

PHYSICAL OVERVIEW
Width: 1035mm (40,75in)
Height: 614mm (24,17in)
Depth: 600mm (23,6in)
Weight: 59kg (130,07lbs)
Material: Birch plywood
Rating: IP43

GS18

18" Passive Subwoofer

🇮🇹 Made in Italy



High performance 18" passive subwoofer designed for outdoor/indoor applications both for rental and permanent installations for touring, large auditorium, stadia, theme parks, clubs and pubs. Its weather resistant rugged cabinet guarantees great durability and optimal performance.

GS18 is a perfect companion for GH412 and GH12 as well as a superb low extension for all other satellites and full-range speakers, driven by GA43 or GA46 amplifiers.

AVAILABLE ACCESSORIES:
GS18-COVER

GENERAL
Continuous Power: 750W
Peak Power: 1500W
Impedance: 8Ω
Frequency Range: 45 Hz - 150 Hz (-6 dB average)
Maximum SPL⁽¹⁾: 132dB (peak)
Continuos SPL: 120dB
Coverage: OMNI

TRANSDUCERS
18" ferrite magnet

AUDIO I/O
Analog power I: 1 x Speakon (4 wires)
Analog power O: 1 x Speakon (4 wires)

PHYSICAL OVERVIEW
Width: 545mm (21,46in)
Height: 610mm (24,02in)
Depth: 600mm (23,6in)
Weight: 35,4kg (76,37lbs)
Material: Birch plywood
Rating: IP43



GP8A

Active PA Column System - Black color

Made in Italy



This active PA column system has an 8" powered subwoofer unit and 3 modular column elements featuring a 4x2,5" K-array™ PAT® (Pure Array Technology) array module.

Plug-and-play design features a mixer 2 mic/line inputs, a stereo AUX input, Bluetooth connectivity and USB player.

Thanks to its compact format, GP8A is the perfect companion for your gig, cocktail party, event or your loud karaoke session at home.

AVAILABLE ACCESSORIES:
GP8A-BAGS

- **GENERAL**
- Power: 200W
- Impedance: 4Ω+4Ω
- Frequency Range: 45Hz - 20KHz
- Maximum SPL⁽¹⁾: 108dB (peak)
- Continuous SPL: 95dB
- Coverage: V.40° - H.100°
- **TRANSDUCERS**
- Subwoofer: 8" ferrite magnet
- Mid High Frequency: 4 x 2.5" ferrite magnet
- **AUDIO I/O**
- Analog balanced I: 2 x XLR female mic/line - 6.3mm jack mono mic/line
- Analog unbalanced I: 3.5mm jack stereo
- USB: USB 2.0 A
- SD slot: SD card
- Bluetooth: 4.2 bluetooth with TWS technology to pair two GP8A for stereo listening
- Analog balanced O: XLR male

AUDIO CONTROLS
Master level control - Analog unbalanced input level control - Analog balanced input level control - Mic input effect control - Subwoofer level control - Mp3 player controls for use with BT, USB pen drive or SD card

AMPLIFIER
Type: 2-channel Class-D audio amplifier
Power 2 x 100W @4ohm
AC input: 50-60Hz 100-240V
Max power consumption: 70W (peak)
Protections: Output short protection, DC Offset, Over Temperature, Under Voltage Over Voltage

PHYSICAL OVERVIEW
Width: 315mm (12,40in)
Height: 910-1857mm (35,82 -73,11in)
Depth: 405mm (15,95in)
Weight: 12,5-14,5kg (27,56-31,97lbs)
Material: ABS
Rating: IP41 (sub) - IP54 (sat)



NOTE: (1) Maximum SPL is calculated using a signal with crest factor 4 (12dB) measured at 1 m



GF22

2x2" Point Source
Column Speaker



GF22 is an ultra compact passive 2x2" full-range point source column speaker. Despite its very small format, GF22 delivers more bass than a standard design, much larger size speaker thanks to a bass reflex cabinet design and an optimized driver filtering. You will be surprised by how much you can get out of such a tiny element!

Sharing the same form factor of GF82 line array, the resilient ABS cabinets makes it perfect for distributed sound applications in fixed outdoor/indoor installations for music and speech in restaurants, hotels, bars, transportation facilities and retail shops.

- **GENERAL**
- Continuous Power: 25W
- Peak Power: 50W
- Impedance: 16Ω
- Frequency Range: 90Hz - 20KHz (-6dB average)
- Maximum SPL⁽¹⁾: 108dB (peak)
- Continuous SPL: 96dB
- Coverage: V.90° - H.90°
- **TRANSDUCERS**
- 2 x 2" woofer ferrite magnet
- **AUDIO I/O**
- Phoenix connector with speaker relaunch
- **PHYSICAL OVERVIEW**
- Width: 60mm (2,36in)
- Height: 600mm (23,23in)
- Depth: 72mm (2,83in)
- Weight: 0,8kg (1,76lbs)
- Material: ABS
- Rating: IP54

GF22W

2x2" Point Source
Column Speaker



GF82

Compact 8x2" Line Array
Column Speaker



Ultra compact 8x2" line array column speaker featuring K-array™ PAT* (Pure Array Technology).

Capable of delivering up to 100W RMS, this tiny beast combines all the benefits of a line array such as the long throw and dispersion control, with a minimal, low eye impact design without sacrificing sound quality.

GF82 is perfect for all those situations that require an even sound distribution and a compact format. Its ABS enclosure makes it suitable both for indoor and outdoor applications in permanent installations for music and speech in hotels, bars, restaurants, retail shops, transportation facilities and conference rooms as well as in residential environments.

For best performance in music applications combine it with a GS6 matched subwoofer.

- **GENERAL**
- Continuous Power: 100W
- Peak Power: 200W
- Impedance: 16Ω (available in 64Ω version GF82-64 and GF82-64W)
- Frequency Range: 160Hz - 20KHz (-6dB average)
- Maximum SPL⁽¹⁾: 117dB (peak)
- Continuous SPL: 96dB
- Coverage: V.10° - H.90°
- **TRANSDUCERS**
- 8 x 2" woofer ferrite magnet
- **AUDIO I/O**
- push button red and black connector
- **PHYSICAL OVERVIEW**
- Width: 60mm (2,36in)
- Height: 600mm (23,23in)
- Depth: 72mm (2,83in)
- Weight: 1,6kg (3,53lbs)
- Material: ABS
- Rating: IP56

GF82W

Compact 8x2" Line Array
Column Speaker



NOTE: (1) Maximum SPL is calculated using a signal with crest factor 4 (12dB) measured at 1m



GS6

6" Passive Subwoofer



Compact 6 "Passive Subwoofer, designed for indoor applications, for permanent installations in retail stores, restaurants, hotels, bars, nightclubs and residential spaces.

Designed to match our GF22 and GF82 loudspeakers as a low frequency extension device. The GS6 features a symmetrical load circuit design, this allows it to be connected directly to most standard loudspeakers such as the GF4 and GF6.

Thanks to a built-in low-pass filter, the GS6 does not require any additional EQ or DSP and can be connected to the same speaker line as the satellites with no hassle!

- **GENERAL**
- Continuous Power: 60W
- Peak Power: 120W
- Impedance: 4Ω
- Frequency Range: 55Hz - 140Hz (-6dB average)
- Maximum SPL⁽¹⁾: 108dB (peak)
- Continuous SPL: 95dB
- Coverage: OMNI

- **TRANSDUCERS**
- 6" woofer ferrite magnet

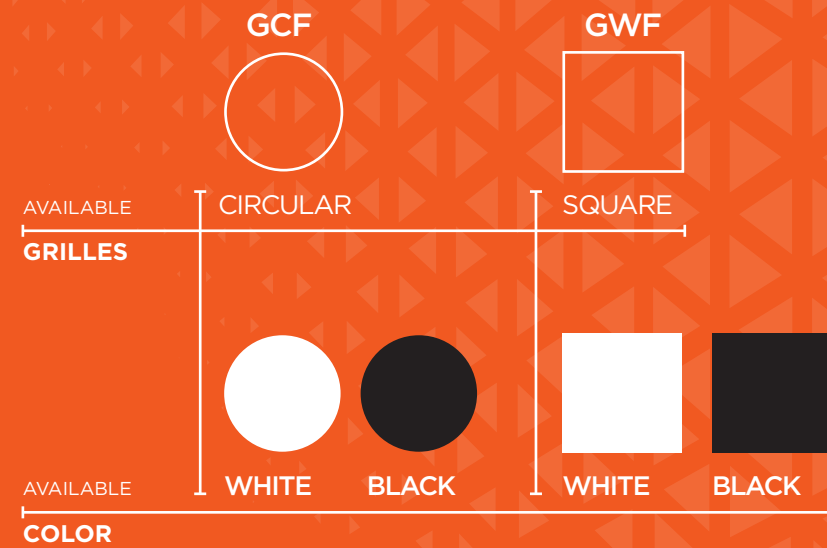
- **AUDIO I/O**
- push button red and black connector

- **PHYSICAL OVERVIEW**
- Width: 170mm (6,69in)
- Height: 310mm (12,20in)
- Depth: 310mm (12,20in)
- Weight: 3,2kg (7,05lbs)
- Material: MDF
- Rating: IP43

NOTE: (1) Maximum SPL is calculated using a signal with crest factor 4 (12dB) measured at 1 m



RECESSED SPEAKERS



AVAILABLE
100V VERSION

8" 6,5"

GCF8 / GCF8W
8" ceiling / in-wall speaker 80W 8 Ω
Made in Italy



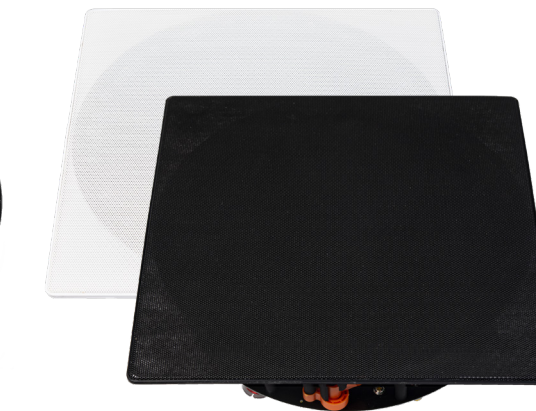
GCF8T / GCF8TW
8" ceiling / in-wall speaker 70/100V
Made in Italy



GWF8 / GWF8W
8" in-wall /ceiling speaker 80W 8 Ω
Made in Italy



GWF8T / GWF8TW
8" in-wall /ceiling speaker 70/100V
Made in Italy



2-way full passive full range speaker for in-ceiling and in-wall installation. Thanks to its 8" woofer, GCF8/GWF8 delivers more bass and SPL than its 6" brother, making it the perfect choice for higher SPL sound distribution both in residential and commercial applications such as apartments, villas, home theaters, hotels, hospitals, bars and restaurants, corporate buildings. GCF8/GWF8 comes with a frameless design grille an orientable tweeter and is available in 8 ohm for small to medium-sized, hi-fi applications as well as in 70/100V version (GCF8T/GWF8T) for large scale distributed sound installations where a very high number of speakers is required. For best performance, depending on power/quantity needs, this speaker can be combined with any KGEAR amplifier (GA201, GA41/41L, GA43/43L, GA46/46L) and subwoofer (GS6, GCF8S, GWF8S). Available in black or white colour, the frameless magnetic grille can also be painted to match any environment.

- GENERAL**
 - Frequency respons: 50 Hz - 20 kHz (+/-3dB)
 - Maximum SPL⁽¹⁾: 112 dB (Peak)
 - Power handling: 80 W | 160 W Peak
 - 4/8/16/32W@100V (2/4/8/16W@70V)
 - Coverage: 130°
 - Connectors: Gold plated push terminals
 - Nominal impedance: 8 Ω - 70/100V
- TRANSDUCERS**
 - 1" titanium dome tweeter
- PHYSICAL OVERVIEW**
 - Dimensions: Ø outer 277 mm (10.9 in)
 - Ø inner 258 mm (10.2 in)
 - Depth: 105 mm (4.1 in)
 - Weight: 2.04 kg (4.5 lb)
 - Material: ABS
 - Colors: White (W) / Black
 - Finishes: Round grill GCF8 / T
 - Square grill GWF8 / T

GCF6 / GCF6W

6,5" ceiling / in-wall speaker 60W 8 Ω

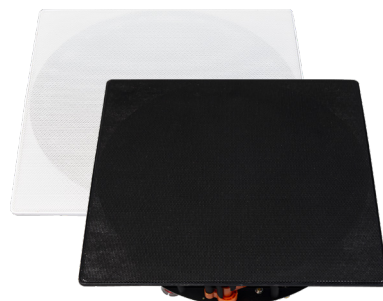
Italy Made in Italy



GWF6 / GWF6W

6,5" in-wall /ceiling speaker 60W 8 Ω

Italy Made in Italy



6,5" 2-way passive full range speaker for in-ceiling and in-wall installation. With a nice frameless grille design and orientable tweeter, GCF6/GWF6 is the go-to solution for sound distribution both in residential and commercial applications such as apartments, villas, small home theaters, hotels, hospitals, bars and restaurants, corporate buildings. GCF6/GWF6 is available in 8 ohm for smaller sized, hi-fi applications as well as in 70/100V version (GCF6T/GWF6T) for large scale distributed sound installations where a very high number of speakers is required. For best performance, depending on power/quantity needs, this speaker can be combined with any KGEAR amplifier (GA201, GA41/41L, GA43/43L, GA46/46L) and subwoofer (GS6, GCF8S, GWF8S). Available in black or white colour, the frameless magnetic grille can also be painted to match any environment.

GCF6T / GCF6TW

6,5" ceiling / in-wall speaker 70/100 V

Italy Made in Italy



GWF6T / GCF6TW

6,5" in-wall /ceiling speaker 70/100 V

Italy Made in Italy



- **GENERAL**
- Frequency response: 60 Hz - 20 kHz (±3dB)
- 50 Hz - 20 kHz (±10dB)
- Maximum SPL⁽¹⁾: 110 dB (Peak)
- Sensitivity : 90 dB
- Power handling: 60 W | 120 W Peak
- 4/8/16/32W@100V (2/4/8/16W@70V)
- Coverage: 130°
- Connectors: Gold plated push terminals
- Nominal impedance: 8 Ω - 70/100V (GCF6T - GWF6T)
- **TRANSDUCERS**
- 6.5" coax ferrite magnet woofer
- 0.75" titanium dome tweeter
- **PHYSICAL OVERVIEW**
- Dimensions Ø outer 227 mm (8.9 in)
- Ø inner 210 mm (8.3 in)
- Depth: 87 mm (3.4 in)
- Weight: 1.52 kg (3,3 lb)
- Material: ABS
- Colors: White (GCF6W / TW - GWF6W / TW) / Black
- Finishes: Round grille GCF6 / T
- Square grille GWF6 / T

GCF3

3" ceiling / in-wall speaker 20W 16 Ω

Italy Made in Italy



GCF3W

3" ceiling / in-wall speaker 20W 16 Ω

Italy Made in Italy



GWF3

3" in-wall /ceiling speaker 20W 16 Ω

Italy Made in Italy



GWF3W

3" in-wall /ceiling speaker 20W 16 Ω

Italy Made in Italy



GCF3/GWF3 is a tiny but performing 3" 2-way full range passive speaker for in-ceiling and in-wall installation. Thanks to its frameless grille design and its extra small format, GCF3/GWF is a very practical and discrete solution for architectural installations that require a multi-point sound distribution. The spring clamps and the magnetic grille allow fast and tool-free installation and its 16 ohm impedance allows multiple speaker connection to KGEAR amplifiers (GA201, GA41/41L or GA43/43L) without any transformer, preserving audio quality. To obtain the best performance and low frequency extension, combine GCF3/GWF3 with a KGEAR subwoofer (GS6, GCF8S, GWF8S). Available in black or white colour, the frameless magnetic grille can be painted to match any environment.

- **GENERAL**
- Frequency response: 130 Hz - 20 kHz (±3dB)
- 100 Hz - 20 kHz (±10dB)
- Maximum SPL⁽¹⁾: 106 dB (Peak)
- Sensitivity: 90 dB
- Power handling: 20 W | 40 W Peak
- Coverage: 130°
- Connectors: Gold plated push terminals
- Nominal impedance: 16 Ω
- **TRANSDUCERS**
- 3" coax ferrite magnet woofer
- 0.5" mylar dome tweeter
- **PHYSICAL OVERVIEW**
- Dimensions: Ø outer 116 mm (4.57 in)
- Ø inner 100 mm (4 in)
- Depth: 58 mm (2.3 in)
- Weight: 0.4 kg (0.88 lb)
- Material: ABS
- Colors: White (GCF3W - GWF3W) / Black
- Finishes: Round grille - GCF3 / W
- Square grille - GWF3 / W

GCF8S / GCF8SW

8" ceiling / in-wall subwoofer 80W 8 Ω

Made in Italy



GCF8S / GCF8SW

8" ceiling / in-wall subwoofer 80W 8 Ω

Made in Italy



GWF8S / GWF8SW

8" in-wall /ceiling subwoofer 80W 8 Ω

Made in Italy



GWF8S / GWF8SW

8" in-wall /ceiling subwoofer 80W 8 Ω

Made in Italy



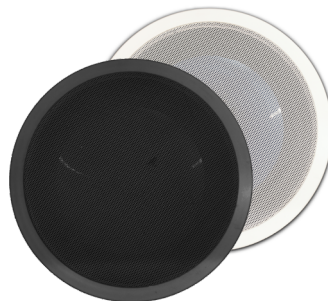
GCF8S/GWF8S is an 8" passive subwoofer for in-ceiling and in-wall installation, designed to work as low frequency extension to our GCF and GWF ceiling/in-wall speakers as well as our GF speakers. It features a built-in passive low-pass filter to be connected on the same line as the satellites without needing a DSP or a separate amplifier channel. Its discrete frameless grille design suits installation both in residential and commercial environments such as home theaters, hotels, retail shops, spa and gyms, bars and restaurants, corporate buildings. Available in black or white colour, the magnetic grille can also be painted to match any environment.

- **GENERAL**
- Frequency response: 45 Hz - 250 Hz (+-3dB)
- Maximum SPL⁽¹⁾: 110 dB (Peak)
- Power handling: 80 W | 160 W Peak
- Coverage: omni
- Connectors: Gold plated push terminals
- Nominal impedance: 8 Ω
- **TRANSDUCERS**
- 8" coax ferrite magnet woofer
- **PHYSICAL OVERVIEW**
- Dimensions: Ø outer 277 mm (10.9 in)
Ø inner 258 mm (10.2 in)
- Depth: 105 mm (4.1 in)
- Weight: 2.0 kg (4.4 lb)
- Material: ABS
- Colors: White (W) / Black
- Finishes: Round grille GCF8 / T
Square grille GWF8 / T

Commercial Audio

GC8/GC8W

8" Ceiling Two Way 8Ω Speaker

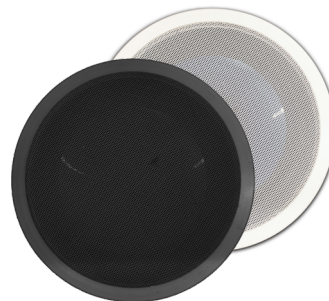


8" full-range two-way passive speaker designed to be installed in the ceiling or in the wall. Suitable for applications in permanent installations for music and speech in conference rooms, hotels, bars, restaurants and retail shops. Nice performance/size ratio featuring easy and fast setup possibility. GA201 (up to 4 pcs/ch) suggested amplifiers.

- **GENERAL**
- Continuous Power: 25W
- Peak Power: 50W
- Impedance: 8Ω
- Frequency Range: 50Hz - 20KHz (-6dB average)
- Maximum SPL⁽¹⁾: 114dB (peak)
- Continuous SPL: 102dB
- Coverage: V.90° - H.90°
- **TRANSDUCERS**
- 8" coaxial woofer ferrite magnet with 1" tweeter
- **AUDIO I/O**
- Screw clamps electrical terminal connector
- **PHYSICAL OVERVIEW**
- Ø outer: 226mm (8,90in) Ø inner: 202mm (7,95in)
- Depth: 94mm (3,70in)
- Weight: 1kg (2,20lbs)
- Material: ABS
- Color: Black, White

GC8T/GC8TW

8" Ceiling Two Way 100V Speaker



8" full-range two-way passive speaker designed to be installed in the ceiling or in the wall. Suitable for applications in permanent installations for music and speech in conference rooms, hotels, bars, restaurants and retail shops. Nice performance/size ratio featuring easy and fast setup possibility. GA43 and GA46 suggested amplifiers.

- **GENERAL**
- Continuous Power: 25W
- Peak Power: 50W
- Impedance: 100V
- Frequency Range: 50Hz - 20KHz (-6dB average)
- Maximum SPL⁽¹⁾: 114dB (peak)
- Continuous SPL: 102dB
- Coverage: V.90° - H.90°
- **TRANSDUCERS**
- 8" coaxial woofer ferrite magnet with 1" tweeter
- **AUDIO I/O**
- Screw clamps electrical terminal connector
- **PHYSICAL OVERVIEW**
- Ø outer: 226mm (8,90in) Ø inner: 202mm (7,95in)
- Depth: 94mm (3,70in)
- Weight: 1kg (2,20lbs)
- Material: ABS
- Color: Black, White

GF6/GF6W

6" Passive Speaker
40W @ 8Ω
10-20-30-40W @ 100V (70V)



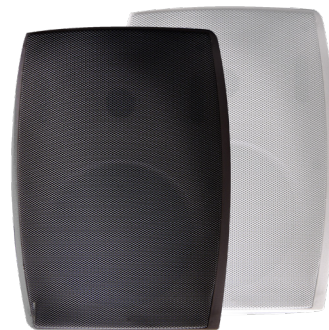
6" full-range two-way wall mount speaker with 8Ω or 70/100V line selector.

Suitable for outdoor/indoor applications in large scale, permanent installations for distributed music and speech in large areas, transportation facilities, hotels, bars and shops.

- **GENERAL**
- Rated Power: 40W
- Peak power: 80W
- Nominal Power (100V): 10-20-30-40W
- Nominal Power (70V): 5-10-15-20W
- Impedance: 8Ω/70-100V with impedance selector switch
- Frequency Range: 90Hz - 20KHz (-6dB average)
- Maximum SPL⁽¹⁾: 114dB (peak)
- Continuous SPL: 102db
- Coverage: V.90° - H.90°
- **TRANSDUCERS**
- 6" subwoofer ferrite magnet + 1" tweeter
- **AUDIO I/O**
- Black and red screw terminals
- **PHYSICAL OVERVIEW**
- Width: 220mm (8,66in)
- Height: 320mm (12,60in)
- Depth: 220mm (8,66in)
- Weight: 3kg (6,61lbs)
- Material: ABS

GF4/GF4W

4" Passive Speaker
25W @ 8Ω
10-20-30-40W @ 100V (70V)



4" full-range two-way wall mount speaker with 8Ω or 70/100V line selector.

Suitable for outdoor/indoor applications in large scale, permanent installations for distributed music and speech in large areas, transportation facilities, hotels, bars and shops.

- **GENERAL**
- Rated Power: 20W
- Peak power: 40W
- Nominal Power (100V): 10-20-30-40W
- Nominal Power (70V): 5-10-15-20W
- Impedance: 8Ω/70-100V with impedance selector switch
- Frequency Range: 110Hz - 20KHz (-6dB average)
- Maximum SPL⁽¹⁾: 108dB (peak)
- Continuous SPL: 96db
- Coverage: V.90° - H.90°
- **TRANSDUCERS**
- 4" subwoofer ferrite magnet + 1" tweeter
- **AUDIO I/O**
- Black and red screw terminals
- **PHYSICAL OVERVIEW**
- Width: 150mm (5,90in)
- Height: 244mm (9,61in)
- Depth: 150mm (5,90in)
- Weight: 1,8kg (3,97lbs)
- Material: ABS

NOTE: (1) Maximum SPL is calculated using a signal with crest factor 4 (12dB) measured at 1 m



GA46 | GA43 | GA41



GA46L | GA43L | GA41L



GA46

4x1500W Power Amplifier With DSP

Made in Italy

Our top of the line compact 4-channel class D amplifier featuring Powersoft™ power module. Delivering up to 1500W RMS per channel, this amplifier drives 70V/100V distributed speaker lines without needing any additional transformer or settings. Remotely controllable with Powersoft™ ArmoniaPlus software through Ethernet connection. Thanks to the modular design, up to 3 units of GA46 (totally 12 channels) fit into 2 rack units with G-RACK accessory. Designed for the most demanding applications for rental and permanent installations in touring and events, auditoriums, transportation facilities, houses of worship, stadiums, theme parks and clubs.

- **GENERAL**
- Input Channels: 2
- Output Channels: 4
- Max Output Power per Channel: 1,500 Watt (RMS EIAJ Single Channel Driven @ 4 ohm)
- Minimum Impedance: 4Ω (2Ω bgm use)
- High Impedance Speaker Lines: 70V-100V
- Internal DSP: 28 bit data path with 56 bit inner processing
- Operating Voltage: 85-264 VAC
- AC Current: 10A Nominal
- Width: 145mm (5,71in)
- Height: 90mm (3,54in)
- Depth: 418mm (16,46in)
- Rack adapter: G-RACK
- **AUDIO I/O**
- Analog balanced I: 2 x Combo jack-XLR female line
- Analog power O: 2 x Speakon out (4 pole)
- **AUDIO CONTROLS**
- Volume potentiometer | RJ45 connector | DSP can be remotely controlled via an Ethernet connection through Powersoft ArmoniaPlus Software

GA43

4x750W Amplifier with DSP

Made in Italy

Compact 4-channel high efficiency class D amplifier featuring Powersoft™ power module and DSP processor. Delivering up to 750W RMS per channel, this amplifier is able to drive 70V lines without any additional transformer or settings. Remotely controllable with Powersoft™ ArmoniaPlus software through Ethernet connection. Thanks to its modular design, 3 elements of GA43 can fit into 2 rack units with a dedicated accessory (G-RACK). Designed for high performance applications for rental and permanent installations such as touring and events, auditoriums, transportation facilities, houses of worship, stadiums, theme parks and clubs.

- **GENERAL**
- Input Channels: 2
- Output Channels: 4
- Max Output Power per Channel: 750 Watt (RMS EIAJ Single Channel Driven @ 4 ohm)
- Minimum Impedance: 4Ω (2Ω bgm use)
- High Impedance Speaker Lines: 70V
- Internal DSP: 28 bit data path with 56 bit inner processing
- Operating Voltage: 85-264 VAC
- AC Current: 7A Nominal
- Width: 145mm (5,71in)
- Height: 90mm (3,54in)
- Depth: 418mm (16,46in)
- Rack adapter: G-RACK
- **AUDIO I/O**
- Analog balanced I: 2 x Combo jack-XLR female line
- Analog power O: 2 x Speakon out (4 pole)
- **AUDIO CONTROLS**
- Volume potentiometer | RJ45 connector | DSP can be remotely controlled via an Ethernet connection through Powersoft ArmoniaPlus Software

GA41

4x150W Power Amplifier with DSP

Made in Italy

Compact 4-channel high efficiency class D amplifier featuring Powersoft™ power module and DSP processor. Delivering up to 150W RMS per channel, this amplifier is able to drive 70V lines without any additional transformer or settings. Remotely controllable with Powersoft™ ArmoniaPlus software through Ethernet connection. Thanks to its modular design, 3 elements of GA41 can fit into 2 rack units with a dedicated accessory (G-RACK). Designed for high performance applications for rental and permanent installations such as touring and events, auditoriums, transportation facilities, houses of worship, stadiums, theme parks and clubs.


- **GENERAL**
- Input Channels: 2
- Output Channels: 4
- Max Output Power per Channel: 150 Watt (RMS EIAJ Single Channel Driven @ 4 ohm)
- Minimum Impedance: 4Ω (2Ω bgm use)
- High Impedance Speaker Lines: 70V
- Internal DSP: 28 bit data path with 56 bit inner processing
- Operating Voltage: 85-264 VAC
- AC Current: 7A Nominal
- Width: 145mm (5,71in)
- Height: 90mm (3,54in)
- Depth: 418mm (16,46in)
- Rack adapter: G-RACK
- **AUDIO I/O**
- Analog balanced I: 2 x Combo jack-XLR female line
- Analog power O: 2 x Speakon out (4 pole)
- **AUDIO CONTROLS**
- Volume potentiometer | RJ45 connector | DSP can be remotely controlled via an Ethernet connection through Powersoft ArmoniaPlus Software

NOTE: (1) Maximum SPL is calculated using a signal with crest factor 4 (12dB) measured at 1 m



GA46L

4x1500W Power Amplifier

Made in Italy 

Our most powerful compact 4-channel class D amplifier featuring Powersoft™ power module.

Delivering up to 1500W RMS per channel, this amplifier is able to drive 70V/100V distributed speaker lines without needing any additional transformer or settings.

Thanks to its modular design, up to 3 elements of GA46L (totally 12 channels) fit into 2 rack units with a dedicated accessory (G-RACK).

Designed for the most demanding applications for rental and permanent installations such as touring and events, auditoriums, transportation facilities, houses of worship, stadiums, theme parks and clubs.

- **GENERAL**
- Input Channels: 4
- Output Channels: 4
- Max Output Power per Channel: 1,500 Watt (RMS EIAJ Single Channel Driven @ 4 ohm)
- Minimum Impedance: 4Ω (2Ω bgm use)
- High Impedance Speaker Lines: 70V-100V
- Operating Voltage: 85-264 VAC
- AC Current: 10A Nominal
- Width: 145mm (5,71in)
- Height: 90mm (3,54in)
- Depth: 418mm (16,46in)
- Rack adapter: G-RACK
- **AUDIO I/O**
- Analog balanced I: 4 x XLR female line
- Analog power O: 2 x Speakon (4 pole)

GA43L

4x750W Power Amplifier

Made in Italy 

Compact 4-channel high efficiency class D amplifier featuring Powersoft™ power module.

Delivering up to 750W RMS per channel, this amplifier is able to drive 70V lines without any additional transformer or settings.


Thanks to its modular design, 3 elements of GA43L can fit into 2 rack units with a dedicated accessory (G-RACK).

Designed for high performance applications both for rental and permanent installations such as touring, auditoriums, transportation facilities, houses of worship, stadiums, theme parks and clubs.

- **GENERAL**
- Input Channels: 4
- Output Channels: 4
- Max Output Power per Channel: 750 Watt (RMS EIAJ Single Channel Driven @ 4 ohm)
- Minimum Impedance: 4Ω (2Ω bgm use)
- High Impedance Speaker Lines: 70V
- Operating Voltage: 85-264 VAC
- AC Current: 7A Nominal
- Width: 145mm (5,71in)
- Height: 90mm (3,54in)
- Depth: 418mm (16,46in)
- Rack adapter: G-RACK
- **AUDIO I/O**
- Analog balanced I: 4 x XLR female line
- Analog power O: 2 x Speakon (4 pole)

GA41L

4x150W Power Amplifier

Made in Italy 

Compact 4-channel high efficiency class D amplifier featuring Powersoft™ power module.

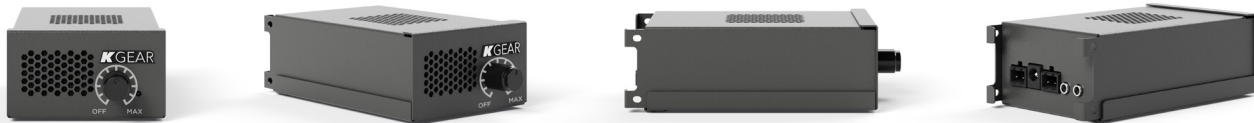
Delivering up to 150W RMS per channel, this amplifier is able to drive 70V lines without any additional transformer or settings.

Thanks to its modular design, 3 elements of GA41L can fit into 2 rack units with a dedicated accessory (G-RACK).

Designed for high performance applications both for rental and permanent installations such as touring, auditoriums, transportation facilities, houses of worship, stadiums, theme parks and clubs.

- **GENERAL**
- Input Channels: 4
- Output Channels: 4
- Max Output Power per Channel: 150 Watt (RMS EIAJ Single Channel Driven @ 4 ohm)
- Minimum Impedance: 4Ω
- Operating Voltage: 85-240 VAC
- Width: 145mm (5,71in)
- Height: 90mm (3,54in)
- Depth: 418mm (16,46in)
- Rack adapter: G-RACK
- **AUDIO I/O**
- Analog balanced I: 4x XLR female line
- Analog power O: 2x Speakon (4 pole)

NOTE: (1) Maximum SPL is calculated using a signal with crest factor 4 (12dB) measured at 1 m



GA201

2 x 125W Amplifier

Made in Italy 

This tiny and essential amplifier is able to deliver 2x125W RMS to a load as low as 2 Ohm, providing an extremely flexible and reliable solution to sound distribution in small sized environments.

Up to 6 amplifiers can be linked together to expand the total amount of speakers thanks to a 3,5mm jack connector.

Designed for permanent installations such as retail shops, restaurants, hotels, pubs, bars and residential, GA201 is perfect for driving KGEAR GF speakers and GS6 subwoofer.

The compact modular design allows to fit up to 6 GA201 elements (12 channels) into 1 rack unit with G-RACKMINI accessory.

- **GENERAL**
- Input Channels: 2
- Output Channels: 2
- Max Output Power per Channel: 125 Watt (RMS EIAJ @ 2 ohm 26VDC)
- Minimum Impedance: 4Ω (2Ω bgm use)
- Operating Voltage: 12-24 VDC 4A
- Power Supply Operating Voltage: 85-245 VAC (external power supply included)
- AC Current: 1A Nominal
- Width: 72mm (2,83in)
- Height: 42mm (1,65in)
- Depth: 131mm (5,16in)
- Rack adapter: G-RACKMINI
- **AUDIO I/O**
- Analog unbalanced I: 3,5mm Jack, stereo
- Analog power O: 2 x Phoenix connectors
- Line O: 3,5mm Jack, stereo (Link Out)

NOTE: (1) Maximum SPL is calculated using a signal with crest factor 4 (12dB) measured at 1 m

Pure Array Technology[®]

Composed of closely-spaced, full-range sound sources, all our line array elements feature our innovative Pure Array Technology (PAT). With no drivers dedicated to the high frequencies, no bass reflex or passive radiators dedicated to the low end, there are no crossover points and a perfect phase response is achieved in both the near and far fields.

All the sound sources in the array are identical and perfectly coupled producing a true line array with benefit of having the sound beam radiated by the column very wide on the horizontal plane and very narrow on the vertical plane.

The amount of energy sent towards the ceiling and the floor is then minimized greatly improving the intelligibility in highly reverberant venues like houses of worship and conference rooms.

Furthermore, such a focused sound beam is able to cover a long distance uniformly. The audience located in front of the array and at the back of the venue will experience the same tonal balance without the need of several delay lines. With no horns and no waveguides, PAT columns can be joined to create longer arrays. The longer the array, the narrower the sound beam and the further the distance that can be covered uniformly.

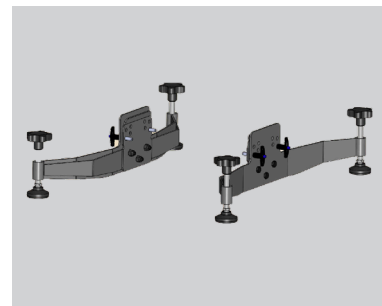
Slim Array Technology[®]

Line array loudspeakers with SAT (Slim Array Technology) feature a hyper-cardioid dispersion pattern in the low-mid frequency range, in which conventional line array loudspeakers are practically omni-directional, contributing to better directivity and control.

Clarity in the low frequencies and extremely fast impulse response are the advantages of speakers with SAT. The combination of these two factors leads to a significantly better acoustic result compared to traditional line array systems, particularly in terms of sound definition and noise pollution outside of the designated audience area.

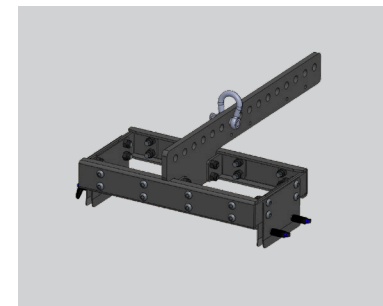
Additionally, the compact profile of the loudspeakers benefits the user due to its practicality when transporting it, the ease of assembly and in general, the minimalist arrangement that optimizes the use of space, time, and therefore, general costs. for the use of these systems.

Accessories



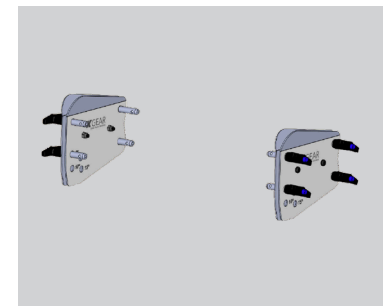
GH-BASE

Stacking hardware for up to 2 GH412 / 8 GH12



GH-FLY

Fly bar for GH12/GH412



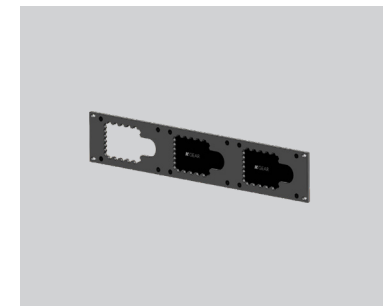
GH-JOINT

2 ears 4 pins set for GH12 / GH412



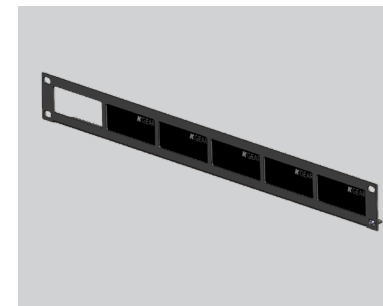
GF-WALL

Wall mount bracket for GF22 / GF82



G-RACK

Rackmount panel for up to 3 GA43/43L GA46/46L



G-RACKMINI

Rackmount panel for up to 6 GA201



GP8A-BAGS

Bag + cover set w / KGEAR logo for GP8A



GS18-COVER

Cover for GS18 w / KGEAR logo



GS218-COVER

Cover for GS218 w / KGEAR logo



www.kgear.it